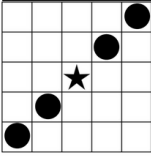




Mega Bingo Bargain Blast Game & Pricing Schedule

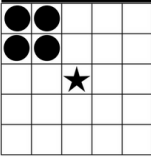
MINI'S

B I N G O



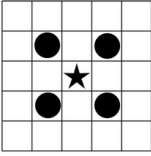
STRAIGHT BINGO ANYWAY

B I N G O



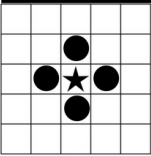
POSTAGE STAMP ANY CORNER

B I N G O



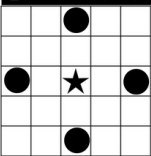
INSIDE CORNER

B I N G O



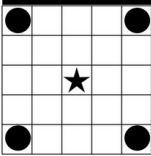
SMALL DIAMOND

B I N G O



LARGE DIAMOND

B I N G O



4 CORNERS

EARLY GAMES

EARLY MINI'S \$400
8 Games - 6 Different ways to WIN (see left)



BIG WINNERS LOVE TABS! Here's Why...

Did you know there's NO LIMIT ON TAB WINNINGS each session, while the State caps bingo at \$5,000 per session? That's why so many players love tabs... the winnings are endless every session!

Be a Courteous Bingo Player

For the enjoyment of all bingo players, please keep conversations and noise levels to a minimum while a bingo game is being called. Thank you for your kindness!



SET GAMES

1. **DOUBLE BINGO**\$1,199
Corners Good
 2. **TRIPLE BINGO**\$1,199
Corners Good
 3. **LAS VEGAS**\$1,199
1 Postage Stamp w/1 Straight Line
 4. **BLACKOUT** → Up you Chances! Buy 3 extra \$1,199
Cover All → Double Action cards! \$10FP
- ★ ★ ★ INTERMISSION ★ ★ ★
5. **PARTY ANIMAL** \$5,000
Cover All (\$25 per strip)
 6. **DOUBLE BINGO**\$1,199
Corners Good
 7. **TRIPLE BINGO**\$1,199
Corners Good
 8. **LAS VEGAS**\$1,199
1 Postage Stamp w/1 Straight Line
 9. **DOUBLE BINGO**\$1,199
Corners Good



Mega Bingo Bargain Blast Pricing

Are you **NEW** to BINGO?

Check out how to set up your electronic, play dab tabs, play race tabs and other helpful tips [HERE](#) →



EXTRA GAMES

Each Session

EARLY MINI'S

- 1-ON/8-UP FULL PAY (8 GAMES, PAYS \$50 EA) \$6.00
- 3-ON/8-UP FULL PAY (8 GAMES PAYS \$50 EA) \$12.00

SET GAMES

Paper & Electronics Each Session

SET PAPER (8 GAMES)

- 6-ON/8-UP FULL PAY \$10.00

ELECTRONICS (8 GAMES)

- 66 FULL PAY CARDS (3 FULL PAY DA CARDS ON GAME 4) \$25.00
- 66 HALF PAY CARDS (3 HALF PAY DA CARDS ON GAME 4) \$12.00

GAME 4 DOUBLE ACTION

- 3-ON/1-UP DOUBLE ACTION PAPER CARDS (PAYS \$1,199) \$10.00
- 63 ADDITIONAL FULL PAY DA CARDS IN ELECTRONIC \$15.00
- 63 ADDITIONAL HALF PAY DA CARDS IN ELECTRONIC \$8.00

BINGO AT IT'S BEST ALL DAY LONG!

	DAYTIME	EVENING	LATE NIGHT
TEXAS BINGOPLEX FORT WORTH 5701 Crowley Rd Fort Worth	M-F Doors open 10:30am Sessions 12noon, 2pm S&S Doors pen 12:30pm Sessions 2pm, 3:30pm	Daily 7 days-a-week Doors open 5:30pm Sessions 7pm, 8:45pm	Daily 7 days-a-week Doors open 10:30pm Sessions 11:30pm, 1am
TEXAS BINGO HURST 449 Bedford Euless Rd Hurst	Thu thru Sun Doors pen 10:30am Sessions 12noon, 2pm	BIRTHDAY SPECIAL Receive a FREE Computer every Session You Play on your Special Day!	
TEXAS BINGO HALTOM CITY 3500 Denton Hwy Haltom City		Daily 7 days-a-week Doors open 5:30pm Sessions 7pm, 8:45pm	