



Texas BingoPlex Fort Worth

Super 750 Sessions

Doors Open 4pm | Sessions @ 7pm and 9:30pm



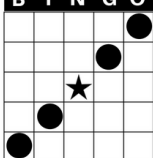
Texas BingoPlex Fort Worth

Super 750 Sessions

Doors Open 4pm | Sessions @ 7pm and 9:30pm

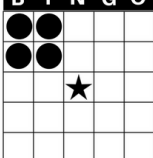
MINI'S

B I N G O



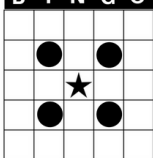
STRAIGHT BINGO ANYWAY

B I N G O



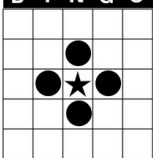
POSTAGE STAMP ANY CORNER

B I N G O



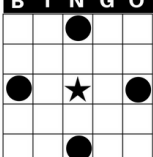
INSIDE CORNER

B I N G O



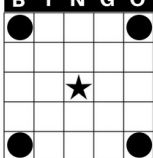
SMALL DIAMOND

B I N G O



LARGE DIAMOND

B I N G O



4 CORNERS

EARLY GAMES SESSIONS 1 & 2

- EARLY MINI'S** \$400
8 Games - 6 Different ways to WIN (see left)
- SPEEDBALL BLACKOUT** \$75
3 Games - Winner paid out in Bingo Products
- EVENT TICKET GAME** \$50
1 Game

SET GAMES SESSIONS 1 & 2

- 1. TRIPLE BINGO** (Corners Good) \$750
- MONSTER MINIS** (9 cards pay out \$50 each with 1 ball call) \$450
- 2. DOUBLE HORIZONTAL** (2 Horizontal Straight Lines) \$750
- 3. BLACKOUT** (Cover All) → Buy a 1-on Full Pay Double Action! \$4 \$750



Play Bingo → Earn Points → Cash In!

Text BINGO to 578-277

TEXAS BINGO REWARDS!

CALLER'S CHOICE SESSIONS 1 & 2

FOLLOWING GAMES ARE FOR TICKET HOLDERS ONLY

- 1. Caller's Choice Tab** (Block of 8) \$750
- 2. Caller's Choice Tab** (Double Postage Stamp Anywhere) .. \$750
- 3. Caller's Choice Tab** (Crazy Letter T - 1 wild #) \$750
- 4. Caller's Choice Tab** (Crazy Reno - 2 wild #'s) \$750
- 5. Caller's Choice Tab** (Crazy 7) \$750
- 6. Caller's Choice Tab** (Double Hard Way - no free space) ... \$750
- 7. Caller's Choice Tab** (BNO - corners good) \$750
- 8. Caller's Choice Tab** (Crazy Kite with Tail) \$750
- 9. Caller's Choice Tab** (Reno Bingo - 1 wild #) \$750
- 10. Caller's Choice Tab** (Crazy H - 1 wild #) \$750

EARLY GAMES

Each Session

- EARLY MINI'S**
- 1-ON/8-UP FULL PAY (8 GAMES, PAYS \$50 EA) \$6.00
- SPEEDBALL BLACKOUT**
- 3-ON/1-UP (3 GAMES, PAYS \$25 EACH GAME IN BINGO PRODUCTS) \$3.00
- EVENT TICKET GAME**
- 3-ON/1-UP (1 GAME) \$1.00

SET GAMES

Electronics Each Session

- ELECTRONICS** (INCLUDES 3 DOUBLE ACTION FACES ON BLACKOUT GAME)
- 66 FULL PAY FACES \$15.00
- 66 FULL PAY FACES FOR 2 SESSIONS \$20.00
- DOUBLE ACTION ELECTRONIC**
- 1-ON/1-UP DOUBLE ACTION GARD \$4.00
- 66 DOUBLE ACTION CARDS ELECTRONIC \$30.00
- 66 DOUBLE ACTION CARDS ELECTRONIC 2 SESSIONS \$50.00
- MONSTER MINI ELECTRONIC**
- EXTRA MONSTER MINI COMPUTER WITH CHANCE AT \$450 \$10.00



☆☆☆ VISIT THE SNACKBAR ☆☆☆



ENJOY A WIDE RANGE OF DELICIOUS FOOD & BEVERAGES WHILE PLAYING BINGO!

UNLIMITED BOGO FREE

EVERY TUESDAY, THURSDAY and SATURDAY

early minis, paper sets, all computer packs

TUESDAY & THURSDAY
12n, 1:30, 7:00, 8:45, 11:30, 1:00a

SATURDAY
12n, 2:00, 3:30, 7:00, 8:45, 11:30, 1:00a

\$5 FP COMPUTERS

EVERY FRIDAY

All Full Pay Sessions
\$5 Full Pay Computers & \$1 Sets

DOORS OPEN 5:30
Sessions at 7:00 and 8:45
and Late Night
Sessions at 11:30 and 1:00a