



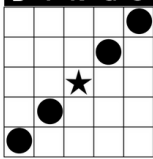
Texas Bingo Haltom City

Super 750 Sessions

Doors Open 4pm | Sessions @ 7pm and 9:30pm

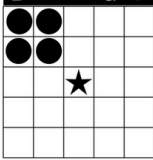
MINI'S

B I N G O



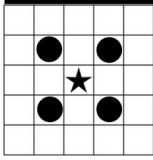
STRAIGHT BINGO ANYWAY

B I N G O



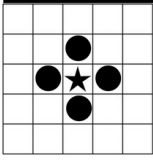
POSTAGE STAMP ANY CORNER

B I N G O



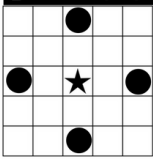
INSIDE CORNER

B I N G O



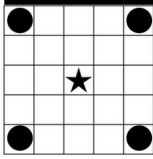
SMALL DIAMOND

B I N G O



LARGE DIAMOND

B I N G O



4 CORNERS

EARLY GAMES SESSIONS 1 & 2

EARLY MINI'S \$400
8 Games - 6 Different ways to WIN (see left)

Stay Up-to-Date with ALL our Specials & Events...

www.TexasBingo.com
www.Facebook.com/TexasBingo
www.Instagram/TexasBingo



Join our email list →



SET GAMES SESSIONS 1 & 2

- 1. **TRIPLE BINGO** (Corners Good) \$750
- MONSTER MINIS** (9 cards pay out \$50 each with 1 ball call) \$450
- 2. **DOUBLE HORIZONTAL** (2 Horizontal Straight Lines) \$750
- 3. **BLACKOUT** (Cover All) → Buy a 1-on Full Pay Double Action! \$4 \$750



Play Bingo → Earn Points → Cash In!

Text BINGO to 578-277

TEXAS BINGO REWARDS!

CALLER'S CHOICE SESSIONS 1 & 2

FOLLOWING GAMES ARE FOR TICKET HOLDERS ONLY

- 1. **Caller's Choice Tab** (Double Bingo - corners good) \$750
- 2. **Caller's Choice Tab** (Double Postage Stamp Anywhere) .. \$750
- 3. **Caller's Choice Tab** (Double Bingo - corners good) \$750
- 4. **Caller's Choice Tab** (Reno Bingo - 1 wild #) \$750
- 5. **Caller's Choice Tab** (Double Bingo - corners good) \$750
- 6. **Caller's Choice Tab** (Las Vegas Bingo) \$750
- 7. **Caller's Choice Tab** (B & O - corners good) \$750
- 8. **Caller's Choice Tab** (Double Bingo - corners good) \$750
- 9. **Caller's Choice Tab** (Crazy Reno Bingo - 2 wild #'s) \$750
- 10. **Caller's Choice Tab** (Double Bingo - corners good) \$750



Texas Bingo Haltom City

Super 750 Sessions

Doors Open 4pm | Sessions @ 7pm and 9:30pm

EARLY GAMES

Each Session

EARLY MINI'S

- 1-ON/8-UP FULL PAY (8 GAMES, PAYS \$50 EA) \$6.00
- 3-ON/8-UP FULL PAY (8 GAMES PAYS \$50 EA) \$12.00

SET GAMES

Electronics Each Session

ELECTRONICS (INCLUDES 3 DOUBLE ACTION FACES ON BLACKOUT GAME)

- 66 FULL PAY FACES \$15.00
- 66 FULL PAY FACES FOR 2 SESSIONS \$20.00

DOUBLE ACTION ELECTRONIC

- 1-ON/1-UP DOUBLE ACTION GARD \$4.00
- 66 DOUBLE ACTION CARDS ELECTRONIC \$30.00
- 66 DOUBLE ACTION CARDS ELECTRONIC 2 SESSIONS \$50.00

MONSTER MINI ELECTRONIC

- EXTRA MONSTER MINI COMPUTER WITH CHANCE AT \$450 \$10.00



☆☆☆ VISIT THE SNACKBAR ☆☆☆



ENJOY A WIDE RANGE OF DELICIOUS FOOD & BEVERAGES WHILE PLAYING BINGO!

Our "Don't Miss" Specials...

UNLIMITED BOGO FREE

EVERY MONDAY, WEDNESDAY AND FRIDAY

early minis, paper sets, all computer packs

DOORS OPEN 5:30
Sessions at 7:00 and 8:45

\$5 FP COMPUTERS

EVERY TUESDAY & THURSDAY

All Full Pay Sessions
\$5 Full Pay Computers

DOORS OPEN 5:30
Sessions at 7:00 and 8:45

LATE NIGHT BINGO @ the Texas BingoPlex Fort Worth

every Tuesday - Saturday | Doors Open 10:30pm | Sessions at 11:30pm and 1:00am