



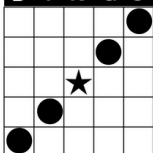
Texas Bingo Haltom City

Super 750 Sessions

Doors Open 4pm | Sessions @ 7pm and 9:30pm

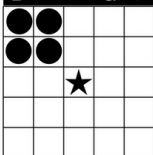
MINI'S

B I N G O



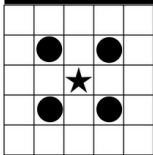
STRAIGHT BINGO ANYWAY

B I N G O



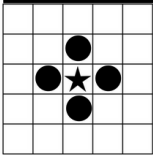
POSTAGE STAMP ANY CORNER

B I N G O



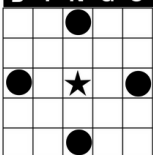
INSIDE CORNER

B I N G O



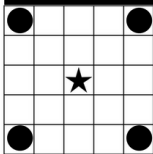
SMALL DIAMOND

B I N G O



LARGE DIAMOND

B I N G O



4 CORNERS

EARLY GAMES SESSIONS 1 & 2

EARLY MINI'S \$400

8 Games - 6 Different ways to WIN (see left)

Stay Up-to-Date with ALL our Specials & Events...

www.TexasBingo.com
www.Facebook.com/TexasBingo
www.Instagram/TexasBingo



Join our email list →



SET GAMES SESSIONS 1 & 2

1. TRIPLE BINGO (Corners Good) \$750

MONSTER MINIS (9 cards pay out \$50 each with 1 ball call) \$450

2. DOUBLE HORIZONTAL (2 Horizontal Straight Lines) \$750

3. BLACKOUT (Cover All) → Buy a 1-on Full Pay Double Action! \$4 \$750



Play Bingo → Earn Points → Cash In!

Text BINGO to 578-277

TEXAS BINGO REWARDS!

CALLER'S CHOICE SESSIONS 1 & 2

FOLLOWING GAMES ARE FOR TICKET HOLDERS ONLY

1. Caller's Choice Tab (Double Bingo - corners good) \$750

2. Caller's Choice Tab (Double Postage Stamp Anywhere) .. \$750

3. Caller's Choice Tab (Double Bingo - corners good) \$750

4. Caller's Choice Tab (Reno Bingo - 1 wild #) \$750

5. Caller's Choice Tab (Double Bingo - corners good) \$750

6. Caller's Choice Tab (Las Vegas Bingo) \$750

7. Caller's Choice Tab (B & O - corners good) \$750

8. Caller's Choice Tab (Double Bingo - corners good) \$750

9. Caller's Choice Tab (Crazy Reno Bingo - 2 wild #'s) \$750

10. Caller's Choice Tab (Double Bingo - corners good) \$750



Texas Bingo Haltom City

Super 750 Sessions

Doors Open 4pm | Sessions @ 7pm and 9:30pm

EARLY GAMES

Each Session

EARLY MINI'S

1-ON/8-UP FULL PAY (8 GAMES, PAYS \$50 EA) \$6.00

3-ON/8-UP FULL PAY (8 GAMES PAYS \$50 EA) \$12.00

SET GAMES

Electronics Each Session

ELECTRONICS

66 FULL PAY CARDS \$15.00

(INCLUDES 3 DOUBLE ACTION CARDS FOR GAME 3)

GAME 3 DOUBLE ACTION

1-ON/1-UP DOUBLE ACTION CARD \$4.00

66 DOUBLE ACTION CARDS ELECTRONIC \$10.00

MONSTER MINI ELECTRONIC

EXTRA MONSTER MINI ELECTRONIC WITH CHANCE AT \$450 \$10.00



☆☆☆ VISIT THE SNACKBAR ☆☆☆



ENJOY A WIDE RANGE OF DELICIOUS FOOD & BEVERAGES
WHILE PLAYING BINGO!

Our "Don't Miss" Specials...

UNLIMITED BOGO FREE

**EVERY MONDAY, WEDNESDAY
AND FRIDAY**

early minis, paper sets, all computer packs

**DOORS OPEN 5:30
Sessions at 7:00 and 8:45**

\$5 FP COMPUTERS

EVERY THURSDAY & SATURDAY

\$5 Full Pay Computers
\$10 Double Action Computers

**DOORS OPEN 5:30
Sessions at 7:00 and 8:45**

DAYTIME BINGO @ Texas Bingo Shady Oaks Hurst

7 Days-a-Week | Doors Open 10:30am | Sessions at 12noon and 2pm