



Texas Bingo Haltom City

Open 7 Days-a-Week
Doors Open 5:30pm → Sessions at 7pm and 8:45pm

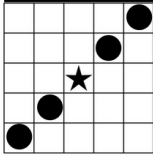


Texas Bingo Haltom City

Open 7 Days-a-Week
Doors Open 5:30pm → Sessions at 7pm and 8:45pm

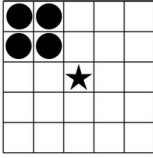
MINI'S

B I N G O



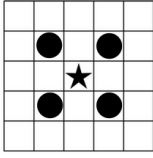
STRAIGHT BINGO ANYWAY

B I N G O



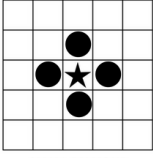
POSTAGE STAMP ANY CORNER

B I N G O



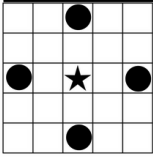
INSIDE CORNER

B I N G O



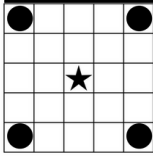
SMALL DIAMOND

B I N G O



LARGE DIAMOND

B I N G O



4 CORNERS

EARLY GAMES

EARLY MINI'S \$400
8 Games - 6 Different ways to WIN (see left)



BIG WINNERS LOVE TABS! Here's Why...

Did you know there is NO LIMIT ON TAB WINNINGS each session, while the State caps bingo at \$2,500 per session? That's why so many players love tabs... the winnings are endless every session!

Be a Courteous Bingo Player

For the enjoyment of all bingo players, please keep conversations and noise levels to a minimum while a bingo game is being called. Thank you for your kindness!



SET GAMES

- 1. **DOUBLE BINGO** \$300
Corners Good
- 2. **TRIPLE BINGO** \$600
Corners Good
- 3. **BLACKOUT** → Buy a 1-on Full Pay \$750
Cover All → Double Action! \$4
- 4. **LAS VEGAS** \$600
1 Postage Stamp w/1 Straight Line
- 5. **DOUBLE BINGO** \$250
Corners Good

Stay Up-to-Date with ALL our Specials & Events...

www.TexasBingo.com
www.Facebook.com/TexasBingo
www.Instagram/TexasBingo



Join our email list →



☆ DELICIOUS FOOD & BEVERAGES ☆

VISIT THE SNACK BAR AND ENJOY A WIDE RANGE OF DELICIOUS FOOD & BEVERAGES!



EARLY GAMES

Each Session

EARLY MINI'S

- 1-ON/8-UP FULL PAY (8 GAMES, PAYS \$50 EA) \$6.00
- 3-ON/8-UP FULL PAY (8 GAMES PAYS \$50 EA) \$12.00

SET GAMES

Paper & Electronics Each Session

SET PAPER

- 6-ON/5-UP FULL PAY (5 GAMES) \$10.00

ELECTRONICS

- 66 FULL PAY CARDS \$5.00

GAME 3 DOUBLE ACTION

- 1-ON/1-UP DOUBLE ACTION PAPER CARD \$4.00
- 66 DOUBLE ACTION CARDS IN ELECTRONIC \$10.00 / \$20.00 / \$30.00
- ★ INCLUDES 4 - \$100 / HALF / FULL PAY SET GAMES (66 CARDS EACH GAME)

MONSTER MINI ELECTRONIC

- MONSTER MINI ELECTRONIC WITH CHANCE AT \$450 \$10.00
- ★ INCLUDES 5 - \$100-PAY SET GAMES (66 CARDS EACH GAME)

Play Bingo → Earn Points → Cash In!

Text BINGO to 578-277

TEXAS BINGO REWARDS!



Our "Don't Miss" Specials...

UNLIMITED BOGO FREE

**MONDAY, WEDNESDAY,
and FRIDAY**

early minis, paper sets, computers,
Double Action computers & Monster Minis

**DOORS OPEN 5:30
Sessions at 7:00 and 8:45**

FREE MINI

EVERY SATURDAY

Wear your Texas Bingo T-Shirt
Receive a FREE Mini with any other purchase
every Session you play!

**DOORS OPEN 5:30
Sessions at 7:00 and 8:45**

DAYTIME BINGO @ Texas Bingo Shady Oaks Hurst @ 449 Bedford Eules Rd
7 Days-a-Week | Doors Open 10:30am | Sessions at 12noon and 2pm